

## MAP UPDATE GUIDE FOR PROTON SUPRIMA S

### Getting started

Please ensure the following before proceed to the steps below.

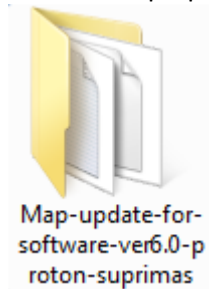
- a. The double-din player OS has been updated to Ver 7.26.
- b. Your computer is connected to internet.

### STEP 1

Remove microSD card from the double-din player and insert it to your computer card reader. (Please ensure that you turn off the car engine before removing the microSD card from the double-din player.)

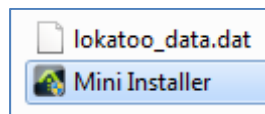
### STEP 2

Unzip the downloaded file. Then open the folder “Map-update-for-software-ver6.0-proton-suprimas”

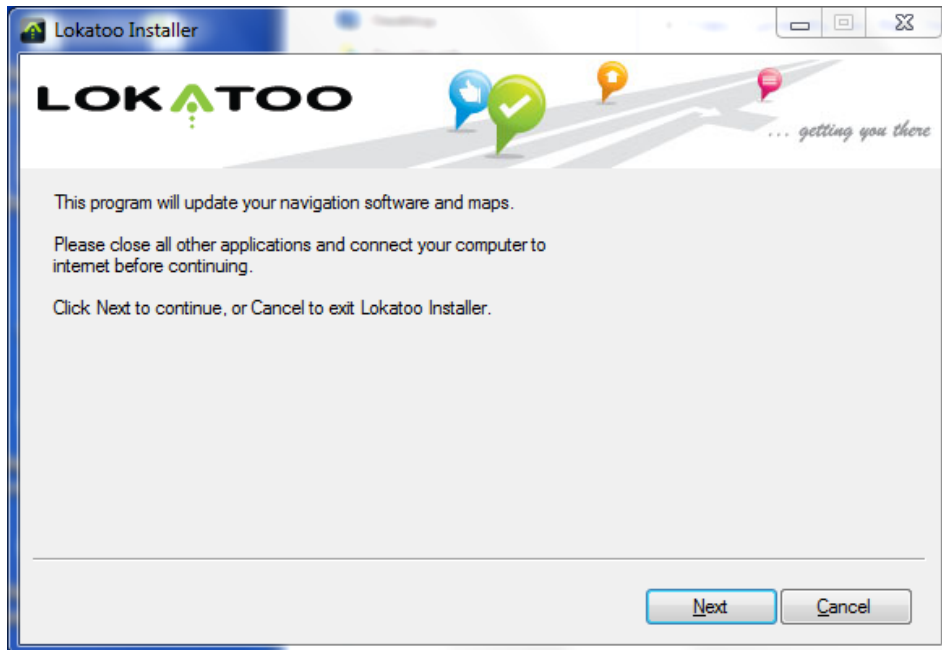


### STEP 3

Double-click the file “Mini Installer”

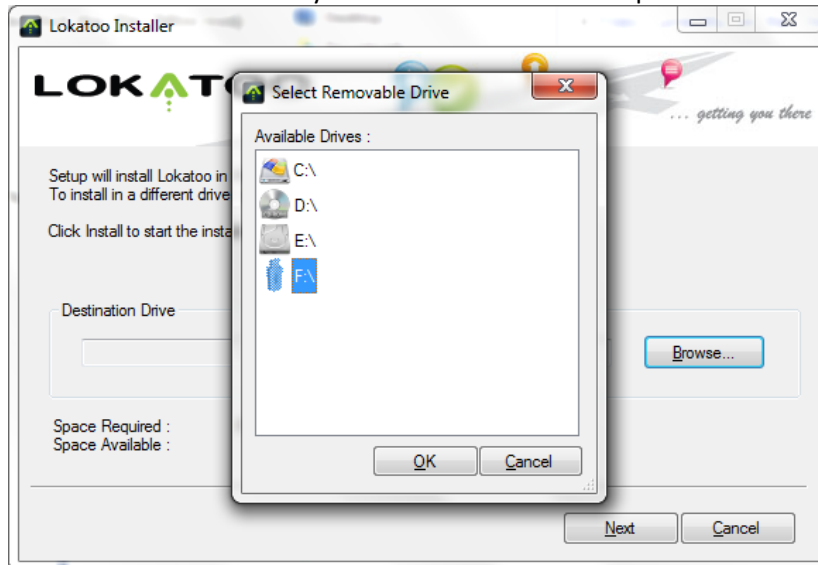


Then tap “Next”



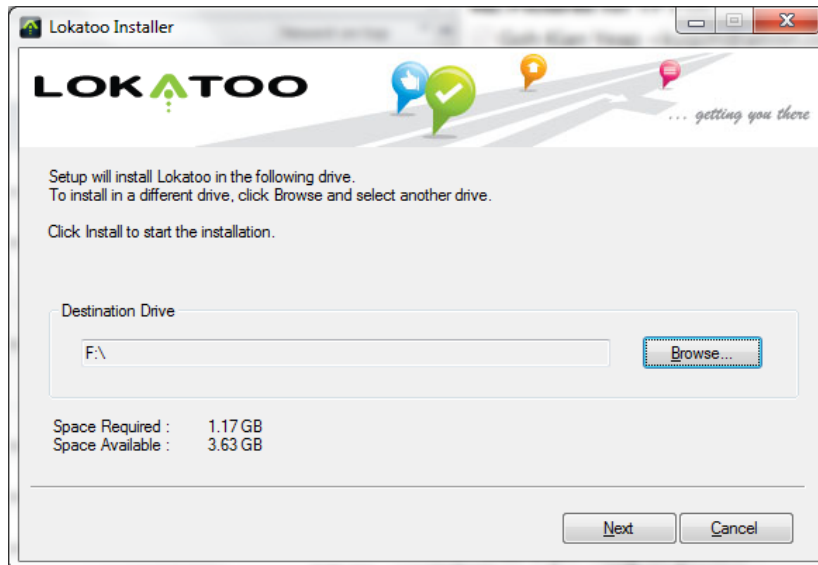
#### STEP 4

Tap "Browse" to select the drive letter of your microSD card. Then tap "OK".



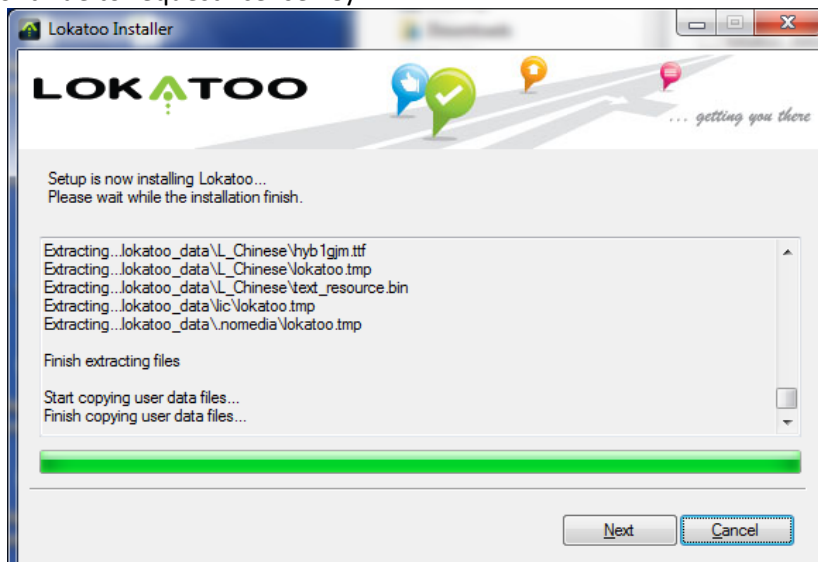
#### STEP 5

Tap "Next" to continue.



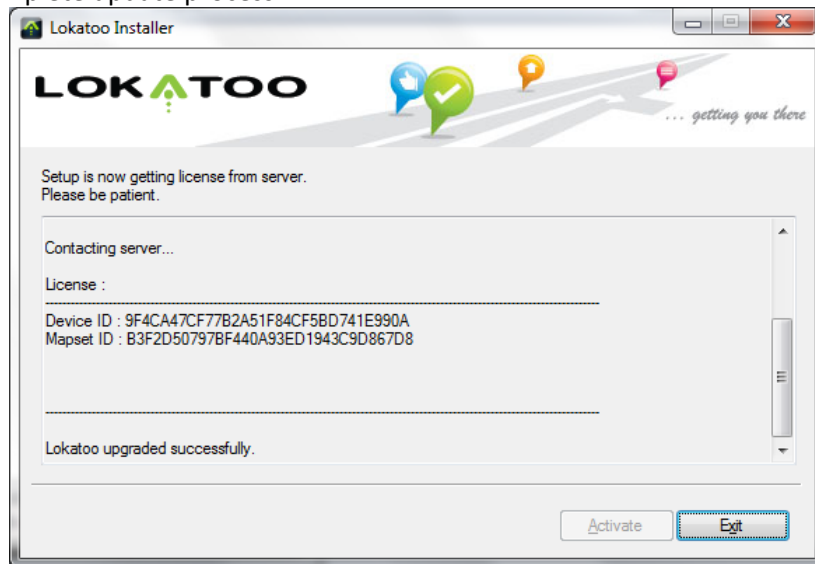
#### STEP 6

Tap "Next" to continue to request license key.



## STEP 7

Tap "Exit" to complete update process.



## STEP 7

Remove the microSD card from your computer card reader and insert it back to the car double-din player. (Please ensure that you insert the microSD card to the double-din player before starting the engine.)